



Elm Grove NEWS-

INDEPENDENT



Vol. 9 No. 11

Serving Elm Grove, Wisconsin & Neighboring Communities

January 2022

Freedom of the Press is Essential. Community News Matters.

Village to Host Gebhardt Road Reconstruction & Potential Pathway

Open House - January 6th

(ELM GROVE) The Village has been working toward the reconstruction of Gebhardt Road and the possibility of including an off-road pathway into this reconstruction project for several years. The project has progressed to a point where preliminary designs have been drafted for review and consideration. These preliminary designs include a general location map and alignment drawing for Gebhardt Road, the potential off-road pathway, and a realigned intersection of Gebhardt Road with Highland Drive. This project is budgeted for construction in 2022.

The public is invited to attend an Open House at the Village Hall court room on January 6, 2022 at 6 p.m. for an overview of the project and to offer the opportunity for those attending to provide feedback on the design. "Consideration (of the project) and input is important to us as we work toward improving the condition of the roadway and explore the options for a potential off-road pathway to improve safety for our residents," said Village officials, adding, "Please take this opportunity to join us for this critical step in the design process as we work toward the construction of this important project."

Additional details are available at www.elmgrovetwi.org.



Elm Grove Board of Trustees members (L to R) **Katy Cornell, John Domaszek, Tom Michalski, Neil Palmer, George Haas, Kristina Sayas, and Patrick Kressin** listen to the comments of a Village resident (at foreground) during the Public Hearing segment of the December 20th meeting. A recording of this and other board meetings can be viewed at www.elmgrovetwi.org.

Village Update

By Neil Palmer, President – Village of Elm Grove npalmer@elmgrovetwi.org

Nearly two years ago, the School Sisters of Notre Dame (SSND) announced their selection of Mandel Development to purchase and redevelop the SSND Campus, restore and maintain the historic Notre Dame and Maria Hall buildings.

Mandel was selected by SSND leadership after more than three years evaluating proposals from different developers. The Village promised a detailed review and analysis of the proposal and laid out a comprehensive and transparent review process. The Village also encouraged the developer to engage directly with site area neighbors to discuss their concerns. The Village stated clearly that the evaluation goals were to collaboratively seek a high-quality project which minimizes impacts,

creates new housing opportunities, helps recharge the Village commercial center and supports the SSND desire to honor their cherished history in Elm Grove. The Village also declared that every effort would be made to make the review process transparent and accessible for everyone.

The initial Conceptual Development proposal from Mandel included 300 rental living units and 100 senior living units on the 25+ acre site for a density ration of about 15.6 units per acre. As the review process moved forward the Village review process began on multiple fronts; the Building Board took the lead on proposed build design and materials and site landscaping, the Public Works and Utilities Committee worked with the

Village engineering consultant to evaluate site stormwater management, traffic issues, and sewer and water facilities, Village public safety departments took the lead on fire protection, EMS service needs and the Police Department addresses public safety. The Planning Commission regulations define 18 different issue areas to be investigated focusing on the zoning, land use types (rental vs. condo vs. single family vs. senior living), development site density, impacts on neighbors. Under Village ordinances the Planning Commission serves as collection point of the evaluation and analysis conducted by other committees, Village staff and consultants.

(See Village Update – Page 3)

Elm Grove Village Hall is reflected in a gazing ball during a past winter.

Photo by James L. W. Bain / News-Independent

Elm Grove will mark the 67th anniversary of its incorporation on January 14, 2022.



*****ECRWSS*****
Postal Customer
Elm Grove, WI 53122

PRSRT STD
US POSTAGE PAID
Elm Grove, WI
Permit No. 30

Elm Grove News-Independent LLC

Founder / Owner / Publisher / Editor

Lisabeth Passalis-Bain

News & Advertising
elmgrovenews@yahoo.com

(262) 782-6193

www.elmgrove.news

Click on ARCHIVE to read past issues.

Photographer / Photo Editor

James L. W. Bain

Production & Distribution Assistant

Christos Passalis-Bain

Web Designer / Webmaster

Nicholas Passalis-Bain

Production Artist

Chaysze Zee

Published monthly.

Distributed via the U.S. Postal Service to every Residence, Business & P.O. Box in Elm Grove, Wisconsin 53122. Additional copies available at select locations within Elm Grove & neighboring communities.

Online @ www.elmgrove.news

Mailing address:

Elm Grove News-Independent
P.O. Box 372
Elm Grove, WI 53122-0372

Copyright 2022 by

Elm Grove News-Independent LLC

All rights reserved.

Any reproduction without written permission from the Publisher is prohibited.

"I Know Where You Live!"



Lisabeth Passalis-Bain

Edition #137

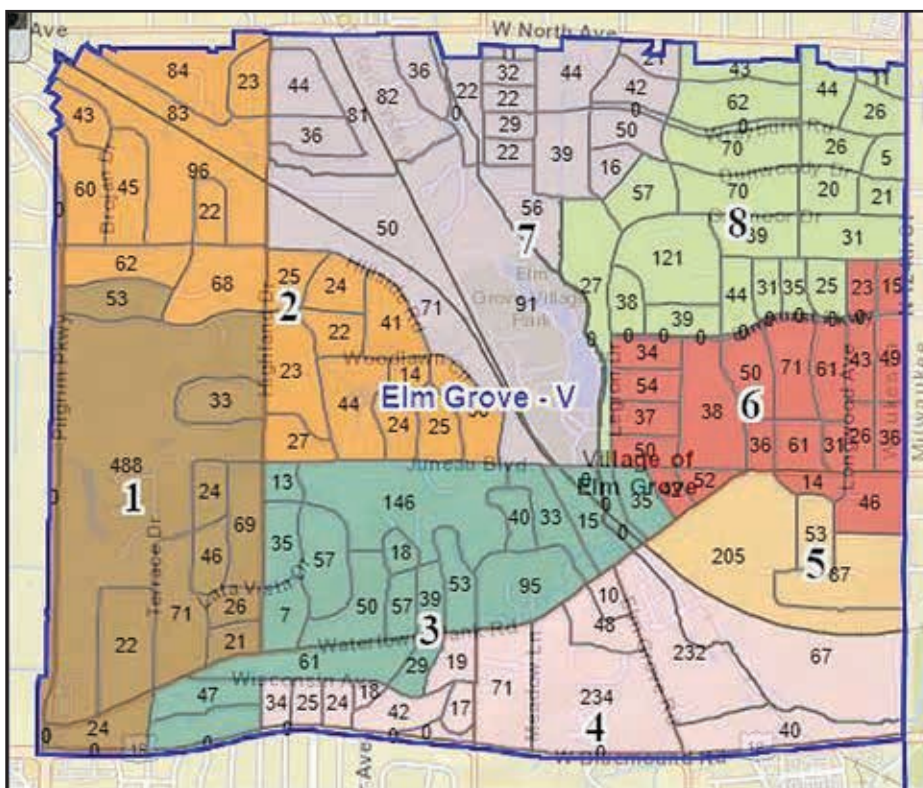
The number above represents the 11+ years that this newspaper has served Elm Grove and neighboring communities, providing news and information, plus some sprinkling of entertainment, more recently in the form of the "Coloring for Kids (and Adults)" feature and the quite popular "Community Crosswords" which I have designed and published during the last two years to help readers learn about and celebrate our area of the world.

This month I've added a new "Volunteers Needed!" section on Page 4, and I invite local organizations to submit listings for upcoming editions. Our community has a proud, long-established volunteer spirit and I hope that this feature serves to bring more people together when and where assistance is needed.

The Elm Grove News-Independent offers something for everyone, and I encourage readers of all ages to take a look at the great "Young Writers & Reporters" stories on Pages 9 and 10.

E-mail: elmgrovenews@yahoo.com or call me at (262) 782-6193 with questions and comments.

TAKE CARE & STAY WELL!



Elm Grove's Population Growth Necessitates Change in Ward Map for Elections

By Michelle Luedtke, Village Clerk

During the last decade the population of Elm Grove has gone up significantly as shown by the last three Census numbers:

- 2000 Census population - 6,249
- 2010 Census population - 5,934
- 2020 Census population - 6,513

<https://www.census.gov/quickfacts/fact/table/elmgrovevillagewisconsin/BZA115219>

Each municipality looked at its maps and determined relevant changes. For our population of less than 10,000, the State wants each ward to be between 300 and 1000 people (Wis Stat 5.15(2)(b)4). We were out of compliance with this State requirement.

At the August 2021 Village Board of Trustees meeting, I introduced a memo with the suggested change in the ward map and the timeline from the County. The new ward recommendation went to the Legislative Committee and the September 2021 Village Board meeting. The approved map is shown above. See the minutes online at www.elmgrovetwi.org for more details.

There are no splits in any seat for Federal, Judicial, State, County, or local races in Elm Grove. All ballots are the same. Therefore, I introduced a Resolution to combine the reporting units from two units (1-4 and 5-8) to one unit (1-8).

What does that mean for Elm Grove voters? You will still come to the Village Hall to vote on Election Day between 7:00 a.m. and 8:00 p.m. The difference will be in what line you stand. With the Village having one reporting unit, we will

be able to split the book by alphabet. You no longer need to remember your ward. We will still provide the map above on Election Day for the curious, but your last name will get you where you need to be.

Once the ward map process has ended, we will put the new map on our website. It will also be available on wisvote.wi.gov.

If we have a February primary, it will be our first election with this new process. Like the 2021 elections, we will have everyone funnel down the long hallway in the lower level of Village Hall. You will provide a photo ID to the poll book workers, state your name and address, sign the book, and receive a ballot. You will go to the privacy booths to vote the ballot. Take the ballot to the machine. The exit door will be on the same side of the hallway as the elevator. For higher turnout elections, we can split A-M in one room and N-Z in another.

If you are interested in being a poll worker, we would love to hear from you. We will need all hands on deck in November for the Gubernatorial. If you are unsure about elections or want more information, we hold training in the lower level the Tuesday before the election at 2:00 p.m. Visit the Clerk's page at elmgrovetwi.org to sign up for the poll worker emails.

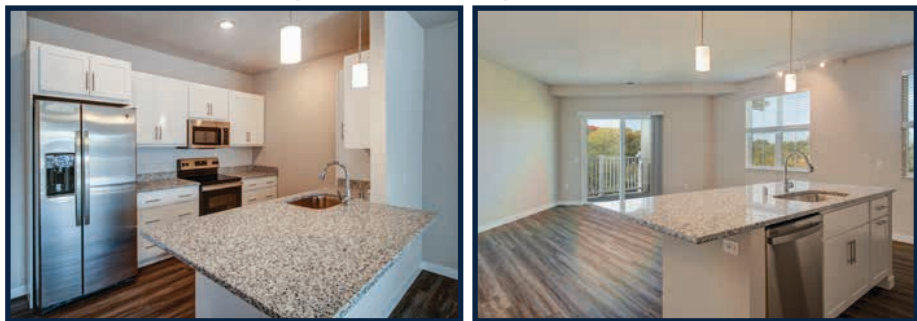
If you have any questions about the map or the election process, please reach out to the Village Clerk at (262) 782-6700.

Election Day date reminders for 2022: February 15th (primary if needed), April 5th, August 9th, November 8th.

ELM GROVE HEIGHTS

OPEN HOUSE

Thursday, January 6 1pm - 3pm
Wednesday, January 26 1pm - 3pm



Affordable Luxury | Independent Senior

For a private tour, please call

262-894-1520

13040 W. Bluemound Road, Elm Grove
www.elmgroveheights.com



Village Update (Continued from Page 1)

During the nearly 2-year review process the public was invited to attend in person or virtually the dozens of meetings conducted to address different issues. All written documents and exhibits created throughout the process were made available for public use online. All this work by Village Board members and citizen volunteers on the Building Board, Planning Commission and Village Board Committees, along with the input of Mandel discussions with site neighbors and community groups resulted in numerous significant changes to the proposed project plans. **The final proposed development plan eliminated the 100 units of senior housing, eliminated the town house rental units along the Red Barn Lane eastern site boundary, added 21 single family home sites and offers a total of 237 rental units of various sizes in the 3 new three-story buildings and the restored Maria Hall and Notre Dame buildings.** The final site plan has a density ratio of 10.1 living units per acre compared to the original 15.6. The new development requires water from Lake Michigan to be provided by the City Wauwatosa system which will accommodate expansion to serve other areas of the Village.

The Village Board and all the citizen volunteers on committees, boards and commissions worked very hard over these past many months to protect the Village interests and help create a great project that will provide benefits for the Village, preserve the historic buildings which mark our beginnings while protecting the Village from any significant negative impacts. Many residents attended public meetings, testified at public hearings, wrote letters, and spoke with Village Board and staff members about issues or concerns. The Village members, staff and the developer listened. Many issues or concerns prompted plan and design changes.

The Village Board voted at the regular December 20th meeting to approve the proposed project plan, site rezoning as a planned development. Anyone who followed this effort closely knows how diligent all the elected and volunteer participants were in seeking to address and answer every issue or concern raised. Of course, not everyone agrees with the decision of the Board. Change is difficult. I know everyone involved really cares about Elm Grove and wants to keep our Village a special place to live. And I believe everyone has done a great job.

There is still work to do before the proposal can move ahead but approval of zoning, building designs, storm water management and site utilities design along numerous other related items is a major step.

The project has requested that the Village provide Tax Incremental financing to support the project. The Village hired financial consultants (Ehlers and Associates) to analyze the request and determine if the request complies with state law requirements. Village directions to the consultant was to determine validity of the project financial plans, the projected project financial returns with and without any assistance and that if such financing is needed to determine that absolute minimum necessary. Wisconsin Tax Incremental financing law requires that such financing only be provided if the project would not move forward without such assistance. **The Ehlers report clearly states that without support the project will not be feasible.** This is not corporate welfare or giving "our tax money" to a private company. The dollars for the TIF financing only exist if the project is built. It is the new property taxes that would be used to support it getting built.



Action to approve a financing agreement for the project was delayed and will be considered in the next few weeks. The delay was caused by a recent Waukesha County court decision in the action brought by three Village residents asking to require the Village either adopt language limiting the Village's power to spend money on public works projects or hold a referendum to determine if the Village Board should be limited in future spending on public works projects without a referendum. This mechanism is called "Direct Legislation," which provides a petition process to allow community residents to propose local government ordinances and force their adoption. The Village Board opposed the proposed ordinance which would require the Village to hold a referendum for any public works project with a cost greater than \$1 million. The Board instead approved an ordinance requiring a voter referendum for public works projects estimated to cost more than \$5 million.

The Board decided to delay consideration of any project financing consideration for the SSND project while we evaluate the possible impact of the Court decision.

The Board also agreed that there will be a referendum on the requested \$1 million limiting ordinance in the next election.

The Board also recognized that that it is necessary to halt plans for any projects with estimated costs approaching \$1 million until the results of the referendum are known. The Gebhardt Road rebuilding and pathway planned for next spring have been indefinitely delayed.

Public works projects with estimated costs approaching \$1 million are becoming more common in Elm Grove. A requirement to hold a referendum will make planning and pricing such projects longer and more difficult. I believe such a requirement is bad policy and difficult to manage. Our government structure calls for citizens to elect representatives (Trustees) to represent their interests in the operating the Village. If the voters don't support the decisions made by the Village Board Trustees, they can be voted out very easily with elections every year for one half the Board.

**Read
Current & past editions
of the
Elm Grove
News-Independent
at
www.elmgrove.news
Click on Archive**

Who's Who at Village Hall

13600 Juneau Boulevard, Elm Grove, Wisconsin 53122

(262) 782-6700 www.elmgrovetwi.org

- Village President:** NEIL PALMER npalmer@elmgrovetwi.org
- Trustees:** KATY CORNELL kcornell@elmgrovetwi.org
 JOHN DOMASZEK jdomaszek@elmgrovetwi.org
 GEORGE HAAS ghaas@elmgrovetwi.org
 PATRICK KRESSIN pkressin@elmgrovetwi.org
 TOM MICHALSKI tmichalski@elmgrovetwi.org
 KRISTINA SAYAS ksayas@elmgrovetwi.org
- Village Manager:** DAVE DE ANGELIS ddeangelis@elmgrovetwi.org
- Zoning & Planning Administrator/Assistant to Village Manager:**
 TOM HARRIGAN tharrigan@elmgrovetwi.org
- Clerk/Deputy Treasurer:** MICHELLE LUEDTKE mluedtke@elmgrovetwi.org
- Finance Director:** MONICA HUGHES mhughes@elmgrovetwi.org
- Municipal Judge:** TIM STEINLE
- Village Attorney:** HECTOR DE LA MORA
- Clerk of Courts:** MARY DOYNE mdoyne@elmgrovetwi.org
- Public Works Director:** RICHARD PAUL, JR. rpauljr@elmgrovetwi.org
- Forester:** RON HILL forester@elmgrovetwi.org
- Recreation Director:** JEROD MIKKELSEN jmikkelsen@elmgrovetwi.org
- Library Director:** SARAH MUENCH muench@elmgrovetwi.lib.wi.us
 Elm Grove Public Library (262) 782-6717

POLICE – FIRE – MEDICAL EMERGENCY: CALL 9-1-1

Police Department (non-emergency) (262) 786-4141

Police Chief: JIM GAGE jgage@elmgrovetwi.org

Fire Chief: DAVID KASTENHOLZ dkastenholtz@elmgrovetwi.org

Medical Director: Dr. JON ROBINSON jrobinson@elmgrovetwi.org



Elm Grove Woman's Club

P. O. Box 203, Elm Grove, WI 53122

2022 – 2023

Village of ELM GROVE Directory

Following a "COVID-compelled" hiatus, a 2022 – 2023 edition of the traditional Elm Grove Village Directory is underway! To ensure its historic success, replies from residents and businesses are essential and very much appreciated. No response is required if your current listing in the 2019-2020 Directory is correct. The form below can be used for **updates, additions** and **corrections**.

RESPONSE DEADLINE: January 31, 2022

Respond **ONLINE:** egwc.org/village-directory
OR

Enclose in envelope and **MAIL** to: Elm Grove Woman's Club Directory, P.O. Box 203, Elm Grove, WI 53122

Please complete all *areas

NAME(S)* _____ (As preferred for the directory)

ADDRESS* _____

PHONE* _____ (number or indicate do not list)

E-MAIL _____ (Optional for Office use only)

Indicate as appropriate:*

____ NEW RESIDENT(S) or BUSINESS

____ CHANGES IN MY/OUR CURRENT LISTING

____ I/WE DO NOT WANT TO BE LISTED (for internal records only)

Message _____

Our History: *Remembrances of Things Past*

The Halfway House

From *Following The Trail* ©1998 by Stephen K. Hauser & Jean R. Stackpole

The Halfway House stood as a noted landmark for over a century at 15350 W. Blue Mound Road in Elm Grove. The story of this fabled dining and drinking establishment began with a federal land grant issued by the U.S. Land Office in 1836, allowing construction of an inn and tavern along the new U.S. Military highway, midway between the small communities of Milwaukee and Prairieville (later renamed Waukesha). Hence the name: Halfway House. The government grant allowed for eight rooms for overnight guests, a stable for horses, and food and spirits licensed to be sold to tired travelers. The inn was built... in the early 1840s, and was to serve as a restaurant for the next 145 years.

Over time, there were several fires at the Halfway House and the building was reconstructed using the original foundation and parts of the original structure, which gave it a rambling, expansive look.



The Halfway House in 1989.

Proprietors with names such as **William C. Hornburg** in the 1920s and **Bill Hitchcock** in the 1950s operated the restaurant, while **Roland "Rollie" Weslow** was associated with ownership and management of the property for 37 years. The establishment was sold to Milwaukee restaurateur **John Fazio** in 1989. It closed for the last time in 1990, and despite the efforts of some local citizens to save it, its furnishing were auctioned off and the building was demolished in 1991 to make way for a Walgreen's drug store.

Coloring for Kids (and Adults)!



Promote
Your Business or Organization.
Support
Your "Hometown" Newspaper!
ADVERTISE!

To request a Rate Sheet,

E-mail: elmgrovenews@yahoo.com

Call: (262) 782-6193



The GROVER family's story...

By Tom Ramstack

During the late 1830s, the **Daniel Grover family** owned a 40-acre farm on what is today the southwest corner of Capital Drive & Lilly Road, in Brookfield. A young daughter, Laura, maintained a journal into which she described her images of what were the earliest days of immigrant, Yankee settlement into the town.



Laura Grover wrote about her joy in experience piecing a quilt during the 1840s: "I wonder, how many of you here can recall the happiest day of their lives? I think I can. A new family came into the town of Brookfield by the name **McNaughton**. Mother had, as the fashion of the day prescribed, made Mrs. McNaughton a visit which she returned. As I was working on the small bits of calico, she asked me if I liked to piece quilts. On my answering on the affirmative, she told me if I would come to her house the next day, she would give me some pieces. Will I ever forget that day? Next morning, smartly dressed in a high-

neck apron, spick, and span, I went to our neighbor's. She gave me all the pieces I could carry in that apron. I shall never forget the ecstasy of that hour. I ran, hopped, and skipped. For days I cut and sewed on those pieces and from them evolved a quilt which contained 1,815 pieces."

About DANIEL GROVER: age 39 in 1845. He was a farmer from New York State who owned a Brookfield (section 11) farm. His wife was Mary. They had 5 children (Milo, Eunice, Laura, Daniel Jr., & Emily). Daniel Grover's father, Salmon, resided with the family.

Volunteers Needed!

*** Community organizations in need of volunteer help are invited to submit a statement (150 words maximum) to: elmgrovenews@yahoo.com

*Waukesha County Meals on Wheels

Volunteers are needed to deliver meals to homebound individuals in our community. Receiving this meal assures them proper nutrition as well as the independence to remain in their homes. Drivers are needed between 11 a.m. – 1 p.m. on weekdays. No weekends or major holidays. Schedules are flexible and mileage reimbursement is available. Help the seniors in our community by volunteering for Meals on Wheels! To learn more, contact the ADRC at (262) 548-7848.

*Sunset Playhouse

Sunset Playhouse loves our volunteers! We rely on them to help create the high-quality productions that Sunset is known for. From working in the Scene Shop to Front of House ushering to helping children make crafts at our bug in a rug Children's Theater shows, we have volunteer opportunities for anyone interested in giving time to the arts. Right now, we are especially looking for ushers, scenery painters, props designers, and back-stage crew. No experience needed - we will train you. If interested, call Brooke at (262) 782-4431 x233. Sunset Playhouse, 700 Wall Street, Elm Grove, WI.

News Briefs

Village Directory

Deadline Approaches

By Alice Hirt

A timely response for being listed in the 2022-2023 Elm Grove Village Directory is upon us. Friends, neighbors and local business owners all benefit from this community publication made available as a courtesy of the Elm Grove Woman's Club.

The deadline for inclusion is this valuable village resource is January 31, 2022. The success and accuracy of the Directory depends upon the response of new residents and businesses as well as from those who have changes in their current listing.

Submit information to: www.egwc.org/village-directory or mail the form (on Page 3) to P.O. Box 203, 13885 Watertown Plank Road, Elm Grove 53122. Questions can be directed to (262) 782-5930.

Christmas Tree Pickup

The Village of Elm Grove's Public Works department will begin picking up natural Christmas trees the week of January 3rd through January 17th, 2022, weather permitting. Trees must be out by the end of driveways well before January 17th to ensure pick up. As a reminder, TREES IN BAGS and/or TREES WITH LIGHTS OR DECORATIONS WILL NOT BE PICKED UP.

ARTIFICIAL TREES or FLOCKED TREES and WREATHS, which are normally assembled with wire, can be disposed of with your regular garbage. Please also make sure that trees placed for pick up are NOT BURIED after a snowfall.

After pickup is complete, the Department of Public Works will NOT be back out to pick up trees again. The next opportunity for disposal will be during Recycle Center hours when they resume on Saturdays in March.

Calendar of Events – January 2022

Saturday – JANUARY 1



• **Blood Drive with Versiti Blood Center of Wisconsin**, hosted by the Elm Grove Junior Guild; 8 a.m. to 1 p.m. at Elm Grove Village Hall court room. To make an appointment, visit <https://bit.ly/elmgrovejuniorguild010122>

Monday – JANUARY 3 Village Hall Closed

Tuesday – JANUARY 4 Elm Grove Picnic and Pool Reservations Open

• **Elm Grove Building Board**
Meeting – 5:30 p.m. at Village Hall
Agenda: www.elmgrovetwi.org

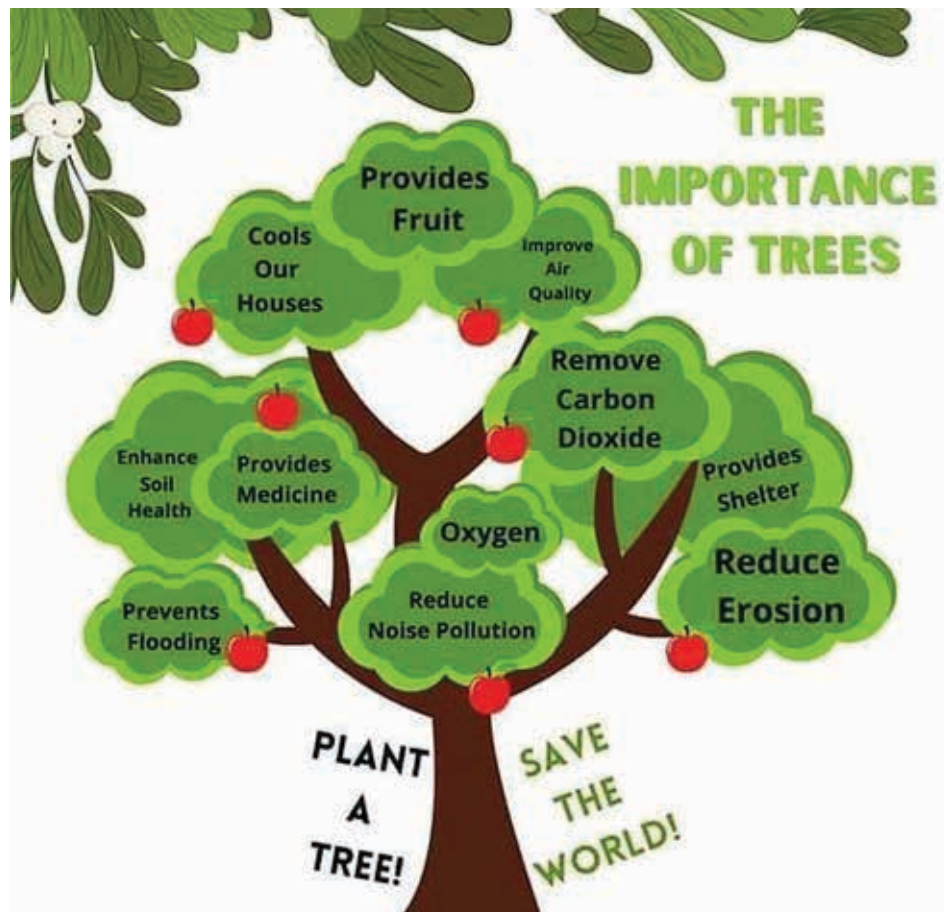
Thursday – JANUARY 6

• **Village of Elm Grove “Open House”** event, regarding the Gebhardt Road Reconstruction and Potential Pathway Project – 6 p.m. at Village Hall Court Room. Open to the Public.
www.elmgrovetwi.org. (262) 782-6700.

“Green” is Good!

Elm Grove Green Team

This is a group for Elm Grove residents who want to help our village become more sustainable. We meet regularly in the village and hope to gain more support and awareness. Check out our Elm Grove Green team on Facebook. For more information, e-mail Deb at info@waukeshacountygreenteam.org.



Friday – JANUARY 7

• **Elmbrook Rotary Club**
Meeting – 7:00 to 8:00 a.m. at Western Racquet Club, Elm Grove; Program: Sachin Chheda, “Gerrymandering”.
<http://www.elmbrookrotary.org>.

• **Elm Grove Kiwanis Club – Golden K**
Meeting – 9:30 a.m. at St. Mary’s Senior Center; Speaker: Detective Jack Kelly, “Milwaukee Police Update”.
kiwaniselmgrove@gmail.com.

Wednesday – JANUARY 12

• **Dementia Friendly Elmbrook** offers Purple Lily Friendship Cafe from 10 to 11:30 a.m. at St John’s Lutheran Church, Brookfield. Community dwelling persons with dementia and their care partners are invited to attend this no-cost activity featuring story telling, crafts, songs and many other engaging activities. For more information or to register, call or text Nancy Shea at (262) 617-7152 or send an e-mail to: Dementiafriendlyelmbrook@gmail.com

Friday – JANUARY 14

Village of Elm Grove’s 67th Anniversary of Incorporation

• **Elmbrook Rotary Club**
Meeting – 7:00 to 8:00 a.m. at Western Racquet Club, Elm Grove; Program: Adam Procell, “Partners in Hope”.
<http://www.elmbrookrotary.org>.

• **Elm Grove Kiwanis Club – Golden K**
Meeting – 9:30 a.m. at St. Mary’s Senior Center; Speaker: Norm Yerke, “A Plan for Life”. kiwaniselmgrove@gmail.com.

Monday – JANUARY 17

Martin Luther King Jr. Day

Tuesday – JANUARY 18

• **Elm Grove Building Board**
Meeting – 5:30 p.m. at Village Hall.
Agenda: www.elmgrovetwi.org.

Thursday – JANUARY 20

• **OWLS – Seniors’ Group**
Luncheon Meeting: 11:30 a.m. at Community United Methodist Church, Elm Grove. Program: “Toilets Around the World”. Guests are welcome. Reservations by January 10 at CUMC.
<http://www.cumceg.org>

Friday – JANUARY 21

• **Elmbrook Rotary Club**
Meeting – 7:00 to 8:00 a.m. at Western Racquet Club, Elm Grove; Program: Select Club Members, “Classification Talks”. <http://www.elmbrookrotary.org>.

• **Elm Grove Kiwanis Club – Golden K**
Meeting – 9:30 a.m. at St. Mary’s Senior Center; Speaker: Adam Plowman, “The Can Market Continued Demand”.
kiwaniselmgrove@gmail.com.

Monday – JANUARY 24

• **Elm Grove Finance & Licensing**
Committee Meeting – 7 p.m. at Village Hall. Agenda: www.elmgrovetwi.org.

• **Elm Grove Board of Trustees**
Meeting- 7:30 p.m. at Village Hall court Room. Open to the Public; Watch at: <https://elmgrovetwi.org/656/live-stream>
Agenda: www.elmgrovetwi.org.

Friday – JANUARY 28

• **Elmbrook Rotary Club**
Meeting – 7:00 to 8:00 a.m. at Western Racquet Club, Elm Grove; Program: Debbie Buchanan, MHVI, “Bikes for Stripes”.
<http://www.elmbrookrotary.org>.

• **Elm Grove Kiwanis Club – Golden K**
Meeting – 9:30 a.m. at St. Mary’s Senior Center; Speaker: Dr. Alex Sutton, “Climate Change & Conservation”.
kiwaniselmgrove@gmail.com.







The senior ministry of Community Church, Elm Grove, invites you to attend any or all of the following 2022 events.

Jan 20	11:30 AM - Community Church Program: “Toilets Around the World” - Terry Tobin
Feb 17	11:30 AM - Community Church “Glory Days of Wisconsin Gas Stations” - Jim Draeger
Mar 17	Trip – Oakbrook, IL Drury Lane Theater: “Evita”
Apr 21	11:30 AM - Community Church Program: “Milwaukee Beer Barons” - Tim John
May 19	Trip—Baraboo, WI International Crane Foundation, Aldo Leopold Foundation & Wisconsin Big Cat Rescue
June 16	Trip—Milton & Janesville, WI Rotary Botanical Gardens, Wisconsin Wagon Co., & McFarlane Pheasant Farm
July 21	11:30 AM - Community Church Program: “Georgia O’Keeffe” - Leslie Goddard
Aug 18	Trip—Kenosha, WI Civil War Museum
Sept 19	Trip—The Annual Mystery Trip!
Oct 20	Trip—Hartford & West Bend, WI Wisconsin Auto Museum, Museum of Wisconsin Art, & The Tower Heritage Center
Nov 17	11:30 AM - Community Church Program: “The Rise & Fall of Ladies’ Underwear”
Dec 8	11:30 AM - Annual Holiday Luncheon — Westmoor CC Entertainment: “Silent Night”, Patty & Craig Siemsen

All are welcome to become a 2022 member for \$15.00 and save on all events — or attend as a guest for a slightly higher cost. For a membership application and monthly event reservation forms go to cumceg.org or stop by the church office. All events include lunch.

Community United Methodist Church, 14700 Watertown Plank Road, Elm Grove, WI 53122

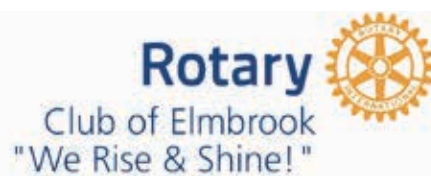
News Briefs

Elmbrook Rotary Club Announces Mini-Grant Recipients

By Larry Myers

In November the Elmbrook Rotary Club approved the disbursement of \$33,650 to local nonprofit charities as part of its Mini-Grant program. The recipients and amount of each grant are as follows:

- BSA Scout Reach Program (\$3,000)
- Milwaukee Civic Music Lessons for Life (\$550)
- Kathy's House (\$1,500)
- Literacy Services of Wisconsin HSED (\$3,000)
- MHVI Bikes for Stripes (\$1,500)
- Milwaukee Youth Symphony Orchestra (\$3,000)
- St. A's Cathy's House Collection (\$5,000)
- Serenity Inn Recovery Program (\$1,000)
- Sharon Lynne Wilson Center for the Arts (\$5,000)
- The Women's Center (\$5,000)
- Veterans in Focus Photography Program (\$1,100)
- Waukesha Food Pantry (match effort) (\$2,000)



- Brookfield German Holiday Market Hayride (\$500)
- *Milwaukee County Historical Society (\$1,500)

This amount does not include monies that have been, or will be, designated for international programs. In Rotary Year 2020-2021 the Elmbrook Rotary Club, through its Elmbrook Rotary Foundation, provided a total of USD \$109,781 to various domestic and international charities.

Elmbrook Rotary Club was chartered in 1983 and currently has approximately 80 members. A Mini-Grant application form can be accessed on its web site: www.elmbrookrotary.org. An application requires a sponsor, who must be a member of the club.

Kids From Wisconsin Auditions to be Held

(MILWAUKEE) The KIDS FROM WISCONSIN show troupe has been entertaining audiences all over Wisconsin, the Midwest and the nation since the KIDS inaugural summer of 1969.

Following a two-week training, this talented group of vocalist/dancers and instrumentalists perform up to 60+ shows each summer and is featured annually at the Wisconsin State Fair.

A summer with the KIDS is one of the most exciting and rewarding experiences an aspiring performer can have. Many KIDS alumni have gone on to successful careers in performance and music education.

In 2022, 36 troupe members will be chosen, 22 singer/dancers and a 14-piece show band.

KIDS is seeking talented Wisconsin youth, ages 15-20. An applicant must be a Wisconsin resident or a student attending a Wisconsin college.

Auditions will be held in Milwaukee on February 27 and March 6, and in Madison on March 5, as well as in other statewide locations.

For those who cannot attend an audition in person, Kids From Wisconsin is also accepting video submissions. Visit: www.kidsfromwi.org for more information.



Photo courtesy: School District of Elmbrook

Brookfield Central High School freshman Robotics Team members (left to right) **Matthew Nustad**, **Sidharth Rane**, and **Josef Keup** deliver laptops to **Toya Griffin** (at right), Senior Director of STEAM Programs at Boys & Girls Clubs of Greater Milwaukee. These laptops were given to FIRST LEGO League (FLL) teams at Boys & Girls Club sites in Milwaukee: 81st Street, Audubon, Cass, Davis, Fitzsimonds, and Prince of Peace.

Elmbrook Robotics Team Helps Teams in Neighboring Communities

(BROOKFIELD) During the Fall of 2021, the FIRST Tech Challenge (FTC) Robotics team, the Gearheads (Team #16460), partnered with the Elmbrook Education Foundation (EEF), the Elmbrook Schools Technology Team, Brookfield Central and Brookfield East High Schools, and the Brookfield and Elm Grove Public Libraries to collect 79 used computers and devices to donate to robotics teams and/or STEM organizations and schools in resource-challenged areas of Milwaukee.

The 14-member FTC team (composed of a student from Wisconsin Hills Middle School, 12 students from Brookfield Central, and a Brookfield East student) collected used devices through a community-wide drive in August and September 2021, then refurbished them through a thorough process of evaluating each device, scrubbing or replacing the hard drives, and loading them with new Windows 10 and robotics software. Of the devices collected, 25 to 30 of them have been refurbished for robotics teams, another 30-40 are being responsibly recycled, and a small number are being sold to fund the software, hardware, and laptop cases.

"I am blown away by the incredible work and initiative that the Gearheads team has taken to help our neighboring schools overcome barriers to learning

and participating in the Robotics experience," said **Dan Scott**, Elmbrook's Director of Technology. "This project will help change the trajectory of students that are interested in a future in technology by providing them with the necessary tools to get there!"

Sidharth Rane, a student involved in orchestrating the project added, "The support of the community to donate these used computers and funds to make this project possible has been absolutely incredible. As a robotics team, we are so excited to take our coding skills to the next level by refurbishing the donated laptops and our team cannot thank everyone enough for their support!"

After connecting with the STEM Program Leader at the Milwaukee School of Engineering (MSOE), the FTC Gearheads delivered laptops to FIRST LEGO League (FLL) teams at six public and private schools affiliated with The Boys and Girls Clubs of Greater Milwaukee, and to FTC teams at Dr. Howard Fuller Collegiate Academy and Golda Meir School, both in Milwaukee. The new computers will enable students to learn and apply coding for their robots in preparation for the STEM program's winter competition season. The remaining laptops will be distributed in the coming months, as additional teams-in-need are identified.

Women and Girls Fund Now Accepting 2022 Grant Letters of Intent

(WAUKESHA) The Women and Girls Fund of Waukesha County (WGF) is accepting letters of intent for grants it will award in 2022. The WGF will award grants up to \$15,000 each for selected programs or projects.

The WGF, established in 2004, seeks to aid and enrich the lives of women and girls so they become thriving residents of their communities. Each year, the WGF awards grants to local nonprofit agencies to support projects and programs that provide opportunities for women and girls of all ages. Grants are awarded for specific, measurable programs that advance the health, education, well-being and empowerment of women and girls in Waukesha County.

In 2021, the WGF awarded grants totaling nearly \$128,000 to 11 area nonprofit organizations. Since its inception, the WGF has awarded more than \$1.3 million in grants to nearly 100 nonprofit organizations focused on improving the lives of women and girls in our community.

Letters of intent for 2022 grants are due in the WGF office by noon on Friday, January 14, 2022. Applicants may submit letters of intent for more than one program or project. Applicants will be notified by Tuesday, February 1, 2022, if they are selected to submit a full grant proposal.

Visit: <https://wgfwaukesha.org> for information.

WE CAN HELP YOU WITH THE *next step.*

Apartments Available

Heritage offers personalized care and service to meet the needs of each individual resident. Well-trained and compassionate staff is available 24 hours per day in addition to a reassuring emergency call system.

Private Studio, One and Two Bedroom apartments are now available.

HERITAGE ELM GROVE

Assisted Living and Memory Care Communities www.heritagesenior.com

Heritage Elm Grove
800 Wall Street
Elm Grove, WI 53122
262-786-5800

News Briefs



Photo by Chris Schulta

(Left to right) **Bennett Schulta, Ian Schulta, Samson Dusek, and Marlee Jansen** pose with care packages assembled during a recent community service project.

Elm Grove Junior Guild & Sunbeam Kids Co-Host Service Project to Benefit Local Foster Families

By Sarah Wynia-Smith

The Village Hall basement was alive on December 6th with families gathered for a service project co-sponsored by the Elm Grove Junior Guild (EGJG) and Sunbeam Kids. The group collectively donated and assembled gift and snack bags for local foster children affiliated with Chavah Family Services.

The event began with an introduction to the mission and vision of Sunbeam Kids, a nonprofit organization dedicated to making volunteer service projects more accessible to children and families. Sunbeam Kids and Elm Grove Junior Guild member **Marlee Jansen** spoke to attendees about foster families. She helped teach the children about why other kids might be involved in foster care and how difficult it can be for foster children and their families of origin. To help kids understand these things, she also read aloud a book called *Finding the Right Spot: When Kids Can't Live with their Parents* by **Janice Levy**.

Knowing that something as small as

a treat bag can show love and care to children in foster care, the group assembled roughly 200 care packages to share with these children. The bags included snacks and small toys donated by the families attending the service project. The event collected an additional \$300 in pizza gift cards from participating families to be used at the Chavah center.

The Chavah center has two buildings in the Milwaukee area to facilitate visits between siblings separated due to foster care arrangements. Likewise, biological parents can use the Chavah center as a visit site with their children currently in foster care. Elm Grove Junior Guild community service co-chair **Chris Schulta** remarked, "This is helpful to keep children and parents connected while parents work on becoming a healthy family again."

For more information about Sunbeam Kids, visit www.sunbeamkids.org. Details about the EGJG are available at www.elmgrovejuniorguild.org.



Photo courtesy: School District of Elmbrook

Stuff the Boat: Members of the Pilgrim Park Middle School (PPMS) Student Senate, along with Center Pointe Boats, conducted a food drive during November 2021. The contributions filled the boat and the cupboards of many families in the Waukesha County area for the winter.



Photo courtesy: Brookfield Academy

EJ Cook

Brookfield Academy senior, EJ Cook, was selected through a highly-competitive audition process to participate in the Wisconsin School Music Association High School State Honors Treble Choir and Mixed Choir Concert. The concert was broadcasted on Thanksgiving Day and on December 26 and can also be streamed anytime at pbswisconsin.org.

ELM GROVE ESTHETICS
— skin beauty bar —

—NEW BUSINESS—

Your skin's new best friend is in town! Experienced Esthetician offering clinical skin care services and products.

Go to:
linktr.ee/elmgroveesthetics
for more information

930 Elm Grove Rd.
414-477-7159

SENIOR LIVING
NOW OPEN!



Welcome to Trinity Woods! Experience a unique senior living lifestyle of well-being, connectedness and convenience in a vibrant intergenerational setting. **Plus, no entrance or endowment fees.**

9525 West Burleigh Street, Milwaukee, WI 53222
(Located adjacent to Mount Mary University)

RESERVE YOUR NEW HOME TODAY!
Call Maureen at 414-225-8252 or visit TrinityWoods.com.

generations *growing* together



Community Wish Lists

Hebron Housing Services

All of our shelters are open during the COVID-19 crisis. If you need shelter, please go to the SHELTERS page of our website for details or call (262) 549-8722. We are actively seeking help from our community: funding to expand our bed space and pay our staff, supplies to keep our guests healthy, and hot meals delivered to the shelters. If you can help, e-mail: vjenkins@hebronhouse.org. Or, visit: <https://hebronhouse.org/donate/>.

Tosa Cares

This organization serves the community by providing assistance to families in need. It is operated by volunteers who collect and distribute non-perishable food, personal care items, and clothing. Visit: <https://www.tosacares.org/donate>.

The FOOD Pantry Serving Waukesha County

Donations can be dropped off at the Food Pantry, 1301 Sentry Drive, Waukesha, 53186. Donations by check are also welcome. Call (262) 542-5300. Top of Form

Hosting a food drive with your congregation, school, community group, neighborhood, or workplace is easy to do and makes a big impact. Call the Food Resource Manager at (262) 522-2374.

Bringing meaning and purpose into life through creative engagement

PURPLE LILY FRIENDSHIP CAFÉ

A social gathering for those with memory loss and their care partners



A comfortable space to connect, socialize, build new friendships and support networks.

Featuring a variety of activities such as storytelling, word games, guest speakers, self-care, art, music and more.

***** Starting on January 12, 2022 *****

Dates: Second Wednesdays of the Month
10:00 AM to 11:30 AM

Location: St. John's Lutheran Church,
20275 Davidson Road, Brookfield, WI

For more information or to register, please contact Nancy Shea by phone at 262-617-7152 or visit dementiafriendlyelmbrook@gmail.com
Brought to you by Dementia Friendly Elmbrook Coalition



Business Directory

* Community Organizations



Kiwanis – Golden K of Elm Grove Wisconsin

Come Join Us, Men & Women, to serve the children of our community. We meet each Friday at 9:30 a.m. in the St. Mary's Senior Center in Elm Grove. We have wonderful speakers each week, and we have lots of fun.

kiwaniselmgrove@gmail.com
www.kiwaniselmgrove.org

Elmbrook Rotary

People of Action

Where neighbors, friends and problem-solvers share ideas, join leaders and take action to create lasting change.

Fridays – 7:00 a.m.

www.elmbrookrotary.org

Join us to make a difference in the world!

* Insurance

Woller-Anger & Company, LLC
930 Elm Grove Road, Elm Grove, WI 53122
(262) 789-2500

“Building Relationships ...
Insuring Success!”

ADD Your Listing

\$5.00 per line (5 lines minimum)

Per edition


Logo: \$20.00 extra

Contact: (262) 782-6192

or E-mail: elmgrovenews@yahoo.com



Read All About It!



Library News and Programs

January 2022

13600 Juneau Blvd., Elm Grove, WI 53122
262-782-6717 / elmgrovelibrary.org

Elm Grove in the 1930s

Wednesday, January 12, 1:00 PM

Local resident and author Tom Ramstack shares stories of the Elm Grove of the 1920s and 1930s. For many years, Ramstack's family ran a tavern in Elm Grove, now known as O'Donoghue's. His presentation, accompanied by photographs, passes along the stories told to him by his father of his adventures (and misadventures) with boyhood friends from the days of their youth in the Elm Grove and Brookfield of old. Free to attend, no registration required.



Have some of your own Elm Grove yesteryear stories? Bring them along! Sharing of stories will be encouraged at this interactive program.

iPhone & iPad Tips, Tricks & Techniques

Monday, January 17, 6:30 p.m.

This hands-on class is specific to Apple iPhone, iPad tablets and iPad Mini devices. Learn tips, tricks, techniques to navigate, organize, backup, and add useful apps to your iPhone, iPad or iPad mini device. Presented by C.T. Kruger. Free to attend. No registration required.



2022 Winter/Spring Programs for Preschoolers

Bright Beginnings Story Time / Tuesdays or Thursdays (choose one day to attend), 10:00 - 10:30 a.m.

For ages 1-3. Stories, rhymes, and songs for the youngest children with a caregiver followed by play time. Stay for Toddler Play Group for additional time and interaction with others.

- January 4/6, 11/13, 18/20, February 1/3, 8/10, 15/17, March 1/3, 8/10, 15/17, 29/31, April 5/7, 12/14

Toddler Play Group / Tuesdays or Thursdays (choose one day to attend), 10:30 - 11:00 a.m.

For ages 1-3 years. Enjoy playtime with special toys, including age-appropriate early literacy toys, and interaction with other toddlers and their caregivers.

- January 4/6, 11/13, 18/20, February 1/3, 8/10, 15/17, March 1/3, 8/10, 15/17, 29/31, April 5/7, 12/14

Morning Break Story Time / Fridays, 10:30 - 11:00 a.m.

Ages 3-5. Early literacy activities for children who have not started 5K yet, including stories, rhymes, and songs.

- January 7, 14, 21, February 4, 11, 18, March 4, 11, 18, April 1, 8

Evening Story Time with Kathy Luck / Mondays, 6:30 - 7:00 p.m.

A story time for families will be presented one evening per month. Join Kathy for a lively mixture of stories, puppets, and music for ages 3-7.

- January 17, February 14, March 14, April 11

WINTER READING CHALLENGE



Pick up your reading card at the Elm Grove Library to begin. Every 10 hours of reading equals one prize entry. Return completed card to the library and place in the prize box of your choice. Prize winners will be drawn 3/21/21. No entry limit. Open to ages 16+.

Sponsored by the Friends of the Elm Grove Library. Happy reading!

Young Writers & Reporters

Book Review:

Rainbow Magic

By Eveleyn Hermes
2nd Grade - Tonawanda

Dear Reader,

Do you like magic? I do! You should read *Rainbow Magic*. The *Rainbow Magic* fairies go on so many adventures. The fairies live in a fairy land. Fairyland is a magical place that they humans don't know about! Well, if you want to learn more READ THIS BOOK!

Book Review:

Should I Share My Ice Cream?

By Lyla Budet, 2nd Grade - Tonawanda

Dear Reader,

Do you like funny books and ice cream? Then you should LOVE this book *Should I Share My Ice Cream?* I do! It is HILARIOUS! At the beginning Gerald says, "Oh boy ICE CREAM!" Gerald thinks of so many ideas about how to share his ice cream. But then it MELTS! It was funny because Gerald's ice cream melted so Piggie had to share his ice cream with Gerald. You should read this book!

Book Review:

I Really Like Slop!

By Nathan Stark, 2nd Grade - Tonawanda

Dear Readers,

Do you love to eat crazy food? Maybe you like to mix foods together to make new things to eat? Well, if you like that, you should read the book, *I REALLY Like Slop!* It is an Elephant and Piggie book. It is so funny! There are flies around the bucket of the slop and it STINKS! Elephant is brave and he tries some slop after Piggie begs him to try. Do you think he will like it? Have fun reading, and eating yummy food while you read it!

Book Review:

Books by Mo Willems

By Arie Barian
2nd Grade - Tonawanda

Dear Reader,

Do you like cute and funny and silly books? Well then you will like **Mo Willems**. Mo Willems writes books like *Elephant and Piggie*. They go on lots of adventures. For example, Piggie goes to a party. Mo Willems also writes books like *Pigeon* or *Knuffle Bunny*. My favorite book is, *Do you want to hear my Trumpet?* Piggie plays the trumpet. You will have to read to find out what happens next.



New Year

By Satvik Reddy, Tonawanda - 4th Grade

New year comes along.

Evergreen trees are almost gone.

Water is frozen.

Year has ended

Entering a new year.

A firework is launched.

Right out the window.

Brynna Dobbe Interview

By Autumn, 4th Grade - Tonawanda

*Do you like to do any outdoor activities in January?

Brynna: "Yes, I like to go skiing and snowboarding."

*Do you have any family traditions in January?

Brynna: "Yes, we always go up north with my grandma."

*What did you do over break?

Brynna: "I went to a giant house where I stayed with my parents' friends and my friends."

Snow

By Ella G., Grade 4 - Tonawanda

Soft and very fluffy

No way to resist jumping in

Optimistic about hot chocolate

White and freezing cold

The New Year

By Talia M., 4th Grade - Tonawanda

This New Year I am going to try to be a stronger reader, so I can read harder books. Become more active at home because I am always on my iPad. Finally, I am going to play outside more because you can never get too much fresh air.

January

By Susie Salinas, Tonawanda - 4th Grade

Snow outside is blowing

Winter's true self is showing

My dogs barking at the mail carrier

And the winter equipment barrier

A true winter sight

Awake into the night

New Years and Christmas have turned up

With confetti cannons blowing up

2022!

By Gus Kolbe, 4th grade - Tonawanda

First of all, HAPPY NEW YEAR! You have probably started to make a new year's resolution and it is sort of easy to do unless you have a lot of ideas. Also, Christmas was a week ago and that was really fun. There wasn't any snow sadly, but it was nice to hang out with your family, drink hot cocoa, eat candy canes and watch movies! But now it's 2022 and there are so many things at the start of the year like Easter and Martin Luther King Jr Day. It is super exciting and I have some ideas for resolutions! Have a wonderful 2022! Goodbye!

Corona Chaos

By Janavi Wagle

7th grade - Pilgrim Park Middle School

(Janavi wrote this poem when he was a 5th grader at the beginning of the pandemic.)

Coronavirus also called COVID-19 wears spiked crowns.

Coronavirus comes from China and a cruise ship.

Corona causes a cold, cough, and congestion. Corona is Contagious causing calamitous consequences around the continents.

Classes and Communities are completely closed.

Careful and cautious communities coming together to control the corona chaos.

Canceled celebrations and closed doors.

Cities are calm and constant, it's a corona curfew.

Classrooms converted to computers, cameras, and chat boxes.

Children's capacity, creativity, and compassion are compromised.

Caretakers are challenged with chaotic child care.

What a complicated Chunk of the century!!!

"Corona calm down!" - Says the CDC (Center of Disease Control)

Communities are finally Coming together to Combat the Crisis.

Come on Children there is a Crazy surprise waiting for you.

oh, Come on! Let's end this Craziiness come get this Cool Covid shot.

MLK Day

AND Mom's B Day

By Lilly M., 4th Grade- Tonawanda

During January, it's my mom's birthday on the 17th, and guess what, Martin Luther King Day falls on the same day as my mom's birthday (what a coincidence). We usually get a day off for MLK day, so that also means me and my family get a day off for my mom's birthday too. YAY! I'm already thinking about what to get her, but I'm not going to tell you because I know my mom is going to read this. But I am going to tell you this, it's homemade. There is so much to do when you have a day off and a birthday, like we could play sports with her in the yard, or maybe we could do her hair, or go to her favorite place, Target! My dad would laugh when I say that my mom's favorite place is Target because it is! I hope my mom has a wonderful birthday and I hope you all who are reading this and more to have a great MLK Day.



Snow

By Jackson Reuter

4th Grade - Tonawanda

Get ready for some snow in January, get boots, gloves, hats, snow pants, and jackets. Do you like the snow? I don't, I only like sledding. Here is a funny story about when I went sledding. One time my sisters and I went to my grandma and papa's, and we went sledding with my grandma. I put the sled down on the hill, and I went down. Suddenly, I went over a huge bump, and flew in the air and it was amazing. Then my grandma said "Are you ok?" and I said "Yes" then a little girl came over and said "Don't do that again because I sprained my arm" but I didn't listen I did it over and over again. That was a fun day!

Winter

By Olive Bern, Tonawanda - 4th grade

Winter here we come

Ice and snow galore

New year brings new goals

Time to make a snowman

Every day we wish for flurries

Really love winter fun.

Book Review:

Henry and Mudge

By Ella Rhode, 2nd Grade - Tonawanda

Do you like stories with friends that like each other? Well, then you're going to love Henry and Mudge! Mudge follows Henry wherever Henry goes. I also like it because the pictures have so much detail, and they tell you what's going on in the book. These books tell you how Henry and Mudge solve problems in the book. It's amazing, awesome and great! Mudge is a dog and Henry is a boy and they are good friends. They go on so many adventures together, they even live in the same house together and do everything together. One time, Henry got a cold and then when it finally went away Mudge got it from Henry. It was so funny. You should read this book.

Book Review:

Flat Stanley

By Zac Boldt, 2nd Grade - Tonawanda

So you like Flat Stanley? He is a flat kid! He can fit under a door. He can use himself as a kite! He can use himself as a surfboard. The pictures show you so much detail. You can tell how they are feeling. There are mostly pictures on every page. The cover of the book has lots of details, too. There is a picture of Flat Stanley on the cover. It is cute. My favorite part is when he slides under the door. I like this part because he runs away from robbers and the robbers can't hear the door close. So, the robbers do not know where he went! You should read this book.

Book Review:

Thomas the Tank Engine

By Oliver Warfield

2nd Grade - Tonawanda

I think you should read about Thomas. It is a book, show, and sometimes a movie. Thomas the tank engine teaches life skills. Little kids all over the world love him. You will know if it's him because he has bright blue paint and a nice big yellow number ONE. You should read about him and his friends, Percy, James, Henry, Gordon, Emily, Toby and many, many more! You should read this book!

The New Year

By Archer Green

4th Grade - Tonawanda

New years is so fun in my family, every time I think about it, I get so happy. There is white elephant, and the countdown until a new year. There are new year resolutions and some other stuff to do. My new year's resolution is to put clothes in a clothes drive or to drive a car but I know my dad will think that's too far. But I think about it and I think that's fine. I'm quite fine with a toy car instead. Parties will be going on the tv to see the count down and the dares that happen. But one of the traditions my family does is go outside to the beach at midnight and jump in the water and celebrate.

**READ THE WORK
OF MORE
YOUNG
WRITERS**

Page 10

Legal Issues

Starting a Business

By Attorney Elisa M. Ruer, Praktess LLC / eruer@praktesslaw.com / 262.269.9140

When you decide to start a business, whether you will work full time in the business or, the business will be more of a side gig for you, there are important factors to consider:

- You need to **form an entity** to own the business. Most common would be a Corporation or a Limited Liability Company. Having a separate entity own the business protects your personal assets should anything go wrong with the business. This is where an attorney and a CPA come into play to determine the best structure to protect you legally while minimizing the impact of taxes. You need both a CPA and an attorney, and they should play well together.
- You need to **decide whether or not you will hire Employees or use Independent Contractors.** There are very strict requirements with either choice, so again, you need the attorney and the CPA to work together on what will work best for you and your business
- **Contracts.** Every business provides a product or a service. You need contracts so that all parties understand what the business is providing, and how the customer/client will pay the business for the product or service. Most business owners overlook the importance of the contracts, and many end up in court over a misunderstanding over a poorly drafted contract.
- **Insurance.** I am a firm believer in insurance ---so you need an experienced insurance agent that specializes in business coverage so that you are protected if something should go wrong with your business, your employees, or your product or service
- **Money.** Working with a Lender to see if you qualify for a line of credit or some other type of loan so you have cash flow early.
Starting a business is exciting and risky; make sure you protect yourself.

LAW OFFICES OF ISABELL M. MUELLER
 Estate Planning, Probate, Wills & Trusts, Powers of Attorney
 890 Elm Grove Rd, Ste 202, Elm Grove WI 53122
 414.430.1722
www.muellerlawoffices.com
 Find Us On Facebook!

Winter Word Search

F G S B W M T X H Q L T S A J D T N L M D U L F
 S A G A K R X H B L C T J L V I V H Q V I Y G D
 S M C F L V P T O I C D C H H D O P L O W V N K
 N W W B Y T P L O T A S N U V M C Q V B Z I I T
 O Q C M O G N I T A K S U G F N L T D M J M I D
 W C U W M F V P S A A X T D R A Z Z I L B B K R
 M J L F Z I R F X W V Z U C P P T E O B A F S A
 A A I E V J T E S N W E B P Y I L K Q K R U S M
 N C A S B V H T E T L X I U N W R E I S D G E E
 Q K K X C L K T E Z F X N X F R O N Q G N E I K
 E F R G D R A S Z N I I G R L T G N J N P L R A
 O R C N U X A S E Q S N R G I A O D S I B B R L
 J O O X N E H P J M J L G D D P U N Z H S D U F
 Y S L R Z M H F E V N B I G E Z O U I S O F L W
 P T D F T G V F U R W Z F G F R A C S I Z F F O
 B M L E F Q C J I E N Y X W Y P K J H F Y F U N
 H O S N O W B A L L H O C K E Y B G N I D I L S
 Y Z K M E F X G A B U M M Y O U L K B A D B D H
 G S L L E B H G I E L S S W T V I O Q X U V Q E
 S L T E K C A J C S N O W B O A R D I N G L F L
 H K O L P S N W L E R T V G D W U G S O R Q V C
 R X G V I B T W F T Y T W E L I B O M W O N S I
 M Q O R E O S P S Q O Q O R E Z W O L E B A E C
 D F I B T S N D R W M S N X N N Q Z H L Z T P I

JACK FROST	SLEIGHBELLS	TUBING	SNOWBOARDING
BAKING	FREEZING	MITTENS	SNOWFLAKE
SCRAPER	SALT	BELOW ZERO	COLD
BLIZZARD	FISHING	SLIDING	SNOWBALL
HOCKEY	SKATING	SKIING	PLOW
ICICLE	DRIFTS	SNOWMOBILE	FLURRIES
GLOVES	JACKET	SCARF	BOOTS
SNOWMAN	SNOW		

Letters to the Editor

- Letters regarding issues of concern to the Elm Grove / Elmbrook / Waukesha County community will be considered for publication on a space available basis.
- Submissions (max: 200 words) must include the writer's name, community & phone #
- Mail to: EGNU, Letters to the Editor, P.O. Box 372, Elm Grove, WI 53122-0372.
- E-mail: elmgrovenews@yahoo.com (subject line: Letters to the Editor)

SSND Articles Appreciated

Thank you and congratulations on your reporting about the School Sisters of Notre Dame during these past months. Your publishing of our archivist's articles and our provincial leader's message of farewell and reflection gave clarity and transparency to our departure from the beautiful village of Elm Grove of which we were an integral part.

You have been our friend and support. May God continue to bless your efforts in building community in Elm Grove.

Sister Carla Huebner, SSND

Young Writers

(Continued from Page 9)

New Year

By Jacob Katula, 4th Grade -Tonawanda

2021 was an okay year but not as bad as 2020. This year was a short year for me, like 2020 was one, too. Going back to school was a big change for me, I was doing school on a computer! But now I am back at school. It is much better than school at home. But I am ready for 2022!



Winter

By Teaghan Coffey
4th Grade- Tonawanda

Wonderful season
It's cold outside
New Year's Eve
The snow is frosty white
Ears get frosty
Rad snowboarding and skiing

New Year

By Jack Hardy, 4th Grade – Tonawanda

Parties will be going, it will be snowing.
People will be smiling,
while confetti is flying.
The countdown will go down,
as a new year will begin.
And the ball will drop
by the town square shop.
And then it will repeat next year.

Classifieds

Listings are \$25 per issue (up to 20 words) + 50 cents for each additional word.
\$20 extra per photo or logo.

E-mail: elmgrovenews@yahoo.com or call (262) 782-6193.

Home Improvement

Tom's Painting
No Job Too Small!
Interior, Exterior, Caulking, Staining
Small Drywall Repairs
Senior Discounts. Great Referrals.
30 Years Experience.
Call (414) 719-0138

**Take care.
Stay well!**

Crossword (Page 12) *Solution*

News' Hounds

& other beloved creatures



Photo Courtesy Elmbrook Humane Society

Graffiti

Adopt a Pet at the Elmbrook Humane Society

By Anita Alfaro

Meet Graffiti! This girl is a true cheesehead - she loves little pieces of cheese as a treat. She has a super sweet and soft meow that she likes to do when she's happy. She'll also knead and make biscuits. She can be a bit uncertain of petting when first getting to know you, but once she does, she loves it! If you are interested in adopting her, fill out an application today!

For more information, call (262) 782-9261 or visit <https://ebhs.org>.



Our Village



Photo by James L. W. Bain / News-Independent

Watertown Plank Road snowman in a past winter: "I'm MELTING, I'm MELTING..."

News Briefs

PPMS Announces Spelling Bee Results

(ELM GROVE) Nolan Scott has been named the winner of the Pilgrim Park Middle School Spelling Bee. Nolan, Enzi Alvaro and Dylan Gaulke will represent PPMS at the Elmbrook School District Spelling Bee that will be held on Thursday, January 20th at 3:00 p.m. in the library of Wisconsin Hills Middle School.

Principal Matt Schroeder from WHMS, Principal Kori Hartman from Swanson Elementary, and Principal Erin King from Brookfield Elementary will be the judges.



Burleigh Elementary Spelling Bee Winners

(BROOKFIELD) The top 3 spellers at Burleigh Elementary School's Spelling Bee were Michelle Yeboah (5th grader), Sujay Gudiwada (4th grader), and Harrison Werch (5th grader). These students will represent Burleigh at the Elmbrook School District Spelling Bee.

The top six spellers from the District Bee, regardless of their grade, will move on to the CESA 1 Regional Bee to be held in February.

WHMS Spelling Bee Winner Named

(BROOKFIELD) The Wisconsin Hills Middle School Spelling Bee was held on Thursday, December 16. After 8 rounds, 7th grade student Maadhav Karun was named school champion. The top 3 WHMS winners: Maadhav, along with 6th grader Kevin Li, and 7th grader Thanmayi Gangireddigari will compete at the District Spelling Bee in January.

Elmbrook's Purse Project Donates Supplies to Milwaukee Rescue Mission & Joy House

(BROOKFIELD) During the month of December 2021, a total of 650 purses, bags and backpacks were delivered to the Milwaukee Rescue Mission's Joy House for the annual Purse Project drive on behalf of those in need in the Milwaukee area this winter. Of the 650, 549 of the bags were stuffed with blankets, books, warm clothing, health and beauty essentials, and other valuable items by members of high school Key Clubs in the School District of Elmbrook to give to individuals and families experiencing homelessness in Milwaukee. The bags and supplies were generously donated by Elmbrook students, staff, and community members at all schools throughout the last few months.

The project was led and organized by District Office's Jean Loepfe. The Mission displayed the bags and purses on shelves for guests to pick up for the holiday as needed. Any remaining purses and supplies will continue to be distributed through the cold winter months.

"Each year I am continuously blown away by the generosity of our community," reflected Loepfe. "It's inspiring to see the support from all members of the Elmbrook community throughout the year and especially during the holiday season."

It was Elmbrook's seventh year of contributing to this cause and one of the largest donations to date.



Good Neighbor Stories

Tell us about

YOUR GOOD NEIGHBORS

in 200 words or less

(how they help you, your neighborhood, the community, the world) and the **Good News** might be featured in an upcoming edition.

E-mail your story + a photo of your neighbor(s), if available to:

elmgrovenews@yahoo.com

(Subject line: Good Neighbors)

or

Mail it to: EGNI "Good Neighbors", P.O. Box 372, Elm Grove, WI 53122.

Community Crossword #19

By Lisabeth Passalis-Bain / elmgrovenews@yahoo.com

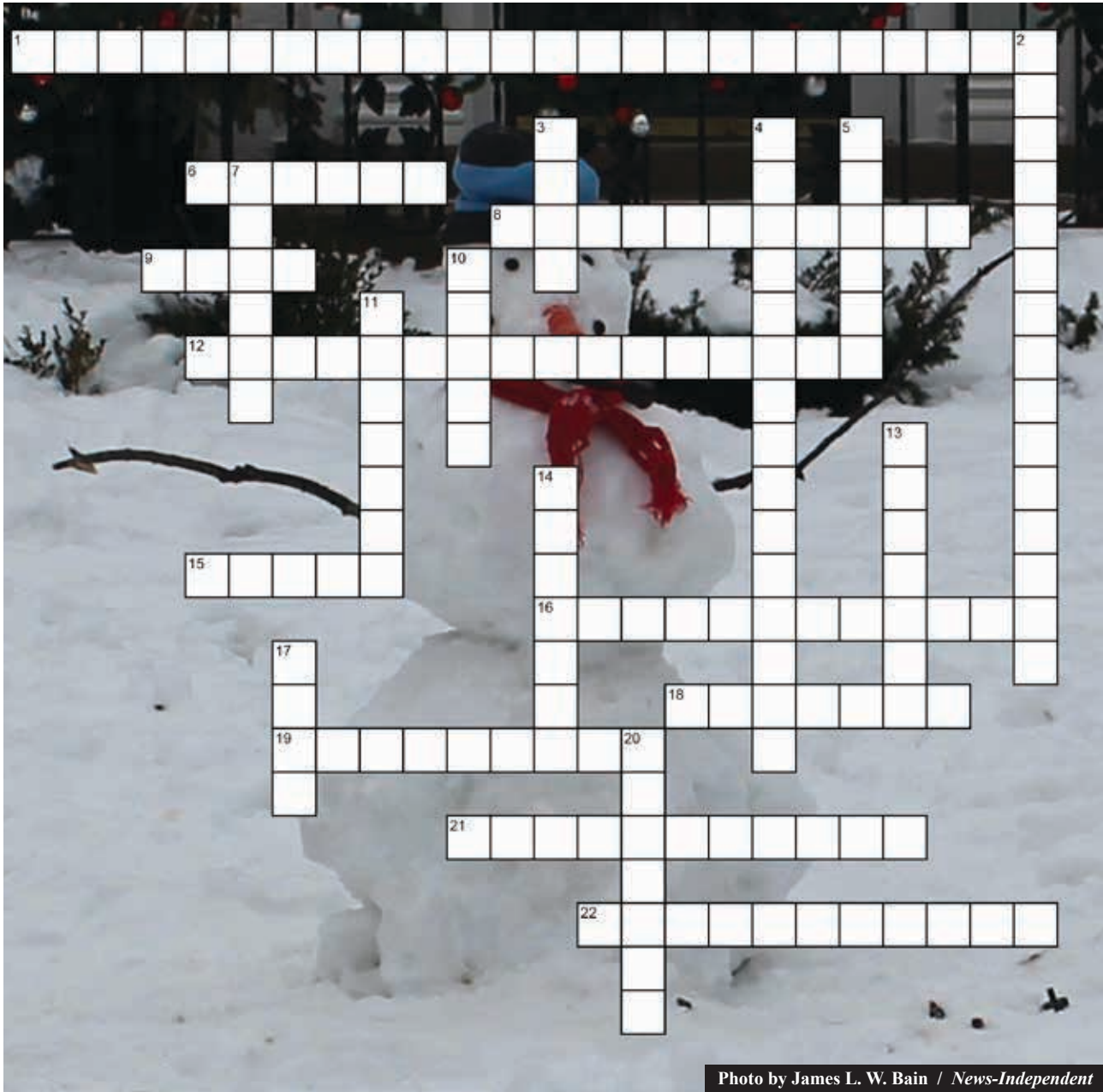


Photo by James L. W. Bain / News-Independent

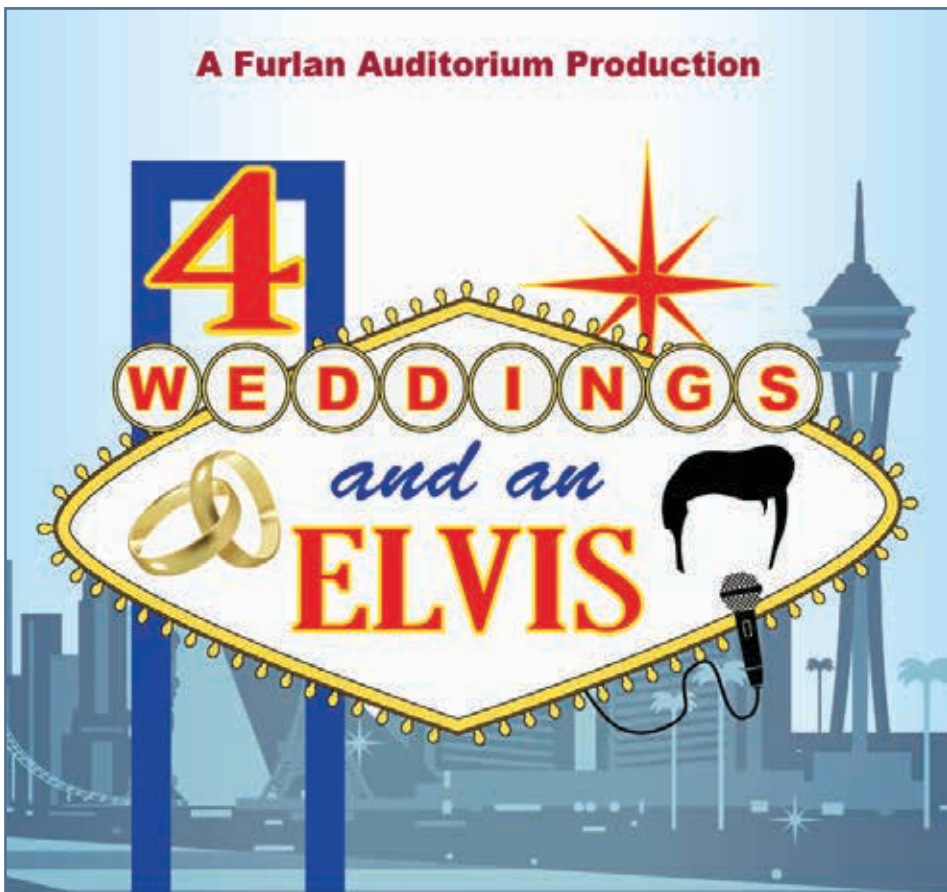
ACROSS

1. Abbreviated EMS (3 words)
6. A very famous snowman
8. A person who is 100 or more years old
9. Infant
12. The Elm Grove Woman's Club publishes this every other year
15. Brookfield East High School is located on this road
16. New Milwaukee residence of many School Sisters of Notre Dame (2 words) <See AD – Page 7>
18. Elm Grove street: ____ Place & first name of historian ____ Hauser
19. English, French, Greek, Portuguese, Japanese & Swahili are types of these
21. January ____ is Dr. Martin Luther King Day
22. Local author & historian who will speak at the Elm Grove Public Library, January 12 (2 words) <See Page 8>

DOWN

2. See a performance of "4 Weddings and an Elvis" at this local theatre (2 words)
3. A haiku is this type of writing
4. Village of Elm Grove's 7-member governing body (3 words)
5. January 7th is on this day of the week
7. Beatrice Potter wrote about "Peter ____"
10. Combine blue and yellow to make this color
11. The first month of the year
13. Elm Grove's is 53122 (2 words)
14. Types include "ice" and "roller"
17. Senior ministry of Community United Methodist Church <See AD – Page 5>
20. Elm Grove street off Watertown Plank Road & Song lyric: "Do you know the way to ____ ____?" (2 words)

SOLUTION on PAGE 10



JANUARY 20 - FEBRUARY 6, 2022

by Nancy Frick
Presented by special arrangement with
SAMUEL FRENCH, INC.

**SUNSET
PLAYHOUSE**

700 Wall Street, Elm Grove, WI 53122
262-782-4430

SunsetPlayhouse.com

About The Elm Grove News-Independent

Celebrating 11+ years in business!

CURRENT PRESS RUN: 5,000 copies per monthly edition
Published by the first day of every month.

- 3,100+ mailed to every residence, business & P.O. Box in Elm Grove, Wisconsin 53122 via USPS.
- 1,800+ Non-mailed copies are available for pick up at many locations in Elm Grove & Brookfield, including:
**Elm Grove Public Library / Brookfield Public Library
Sendik's / Elliott's Ace hardware / Yemas Family Restaurant**

Printed copies are also distributed to community groups, individuals, schools, churches & at area events.

To receive a PDF of our current edition via e-mail, contact elmgrovenews@yahoo.com.

READ current & many past editions at www.ElmGrove.news (Click on Archive)

Support Your Locally-focused Newspaper.

ADVERTISE!

TO REQUEST A RATE SHEET:

E-mail: elmgrovenews@yahoo.com or Call: (262) 782-6193

Community News Matters. Help us provide it.

